

3410-7030 D

PROVINCIA DE O'HIGGINS
COMUNA DE MALLOA

DISTRITO 1
V-A-1 008-0017 Indivisos
R-1 1111-1-7 Indivisos
V-B 1000-1-2-4-5-6-7-8-9-10-11-12-25
V-C 100-100-10-17, 108-26-31
V-D 100-100-10-17, 108-26-31
V-E 100-100-10-17, 108-26-31

DISTRITO 2
V-A 108-25-26 Indivisos
R-1 108-25-26 Indivisos
V-B 108-25-26 Indivisos
V-C 108-25-26 Indivisos
V-D 108-25-26 Indivisos
V-E 108-25-26 Indivisos

DISTRITO 3
R-1 135-00-17 Indivisos
R-1 54-02-10, 54-02-11, 54-02-12, 54-02-13, 54-02-14, 54-02-15, 54-02-16, 54-02-17, 54-02-18, 54-02-19, 54-02-20, 54-02-21, 54-02-22, 54-02-23, 54-02-24, 54-02-25, 54-02-26, 54-02-27, 54-02-28, 54-02-29, 54-02-30, 54-02-31, 54-02-32, 54-02-33, 54-02-34, 54-02-35, 54-02-36, 54-02-37, 54-02-38, 54-02-39, 54-02-40, 54-02-41, 54-02-42, 54-02-43, 54-02-44, 54-02-45, 54-02-46, 54-02-47, 54-02-48, 54-02-49, 54-02-50, 54-02-51, 54-02-52, 54-02-53, 54-02-54, 54-02-55, 54-02-56, 54-02-57, 54-02-58, 54-02-59, 54-02-60, 54-02-61, 54-02-62, 54-02-63, 54-02-64, 54-02-65, 54-02-66, 54-02-67, 54-02-68, 54-02-69, 54-02-70, 54-02-71, 54-02-72, 54-02-73, 54-02-74, 54-02-75, 54-02-76, 54-02-77, 54-02-78, 54-02-79, 54-02-80, 54-02-81, 54-02-82, 54-02-83, 54-02-84, 54-02-85, 54-02-86, 54-02-87, 54-02-88, 54-02-89, 54-02-90, 54-02-91, 54-02-92, 54-02-93, 54-02-94, 54-02-95, 54-02-96, 54-02-97, 54-02-98, 54-02-99, 54-02-100

DISTRITO 4
V-A 100-100-10-17, 108-26-31
R-1 100-100-10-17, 108-26-31
V-B 100-100-10-17, 108-26-31
V-C 100-100-10-17, 108-26-31
V-D 100-100-10-17, 108-26-31
V-E 100-100-10-17, 108-26-31

DISTRITO 5
V-A 100-100-10-17, 108-26-31
R-1 100-100-10-17, 108-26-31
V-B 100-100-10-17, 108-26-31
V-C 100-100-10-17, 108-26-31
V-D 100-100-10-17, 108-26-31
V-E 100-100-10-17, 108-26-31

DISTRITO 6
V-A 100-100-10-17, 108-26-31
R-1 100-100-10-17, 108-26-31
V-B 100-100-10-17, 108-26-31
V-C 100-100-10-17, 108-26-31
V-D 100-100-10-17, 108-26-31
V-E 100-100-10-17, 108-26-31

DISTRITO 7
V-A 100-100-10-17, 108-26-31
R-1 100-100-10-17, 108-26-31
V-B 100-100-10-17, 108-26-31
V-C 100-100-10-17, 108-26-31
V-D 100-100-10-17, 108-26-31
V-E 100-100-10-17, 108-26-31

DISTRITO 8
V-A 100-100-10-17, 108-26-31
R-1 100-100-10-17, 108-26-31
V-B 100-100-10-17, 108-26-31
V-C 100-100-10-17, 108-26-31
V-D 100-100-10-17, 108-26-31
V-E 100-100-10-17, 108-26-31

DISTRITO 9
V-A 100-100-10-17, 108-26-31
R-1 100-100-10-17, 108-26-31
V-B 100-100-10-17, 108-26-31
V-C 100-100-10-17, 108-26-31
V-D 100-100-10-17, 108-26-31
V-E 100-100-10-17, 108-26-31

DISTRITO 10
V-A 100-100-10-17, 108-26-31
R-1 100-100-10-17, 108-26-31
V-B 100-100-10-17, 108-26-31
V-C 100-100-10-17, 108-26-31
V-D 100-100-10-17, 108-26-31
V-E 100-100-10-17, 108-26-31

DISTRITO 11
V-A 100-100-10-17, 108-26-31
R-1 100-100-10-17, 108-26-31
V-B 100-100-10-17, 108-26-31
V-C 100-100-10-17, 108-26-31
V-D 100-100-10-17, 108-26-31
V-E 100-100-10-17, 108-26-31

DISTRITO 12
V-A 100-100-10-17, 108-26-31
R-1 100-100-10-17, 108-26-31
V-B 100-100-10-17, 108-26-31
V-C 100-100-10-17, 108-26-31
V-D 100-100-10-17, 108-26-31
V-E 100-100-10-17, 108-26-31

DISTRITO 13
V-A 100-100-10-17, 108-26-31
R-1 100-100-10-17, 108-26-31
V-B 100-100-10-17, 108-26-31
V-C 100-100-10-17, 108-26-31
V-D 100-100-10-17, 108-26-31
V-E 100-100-10-17, 108-26-31

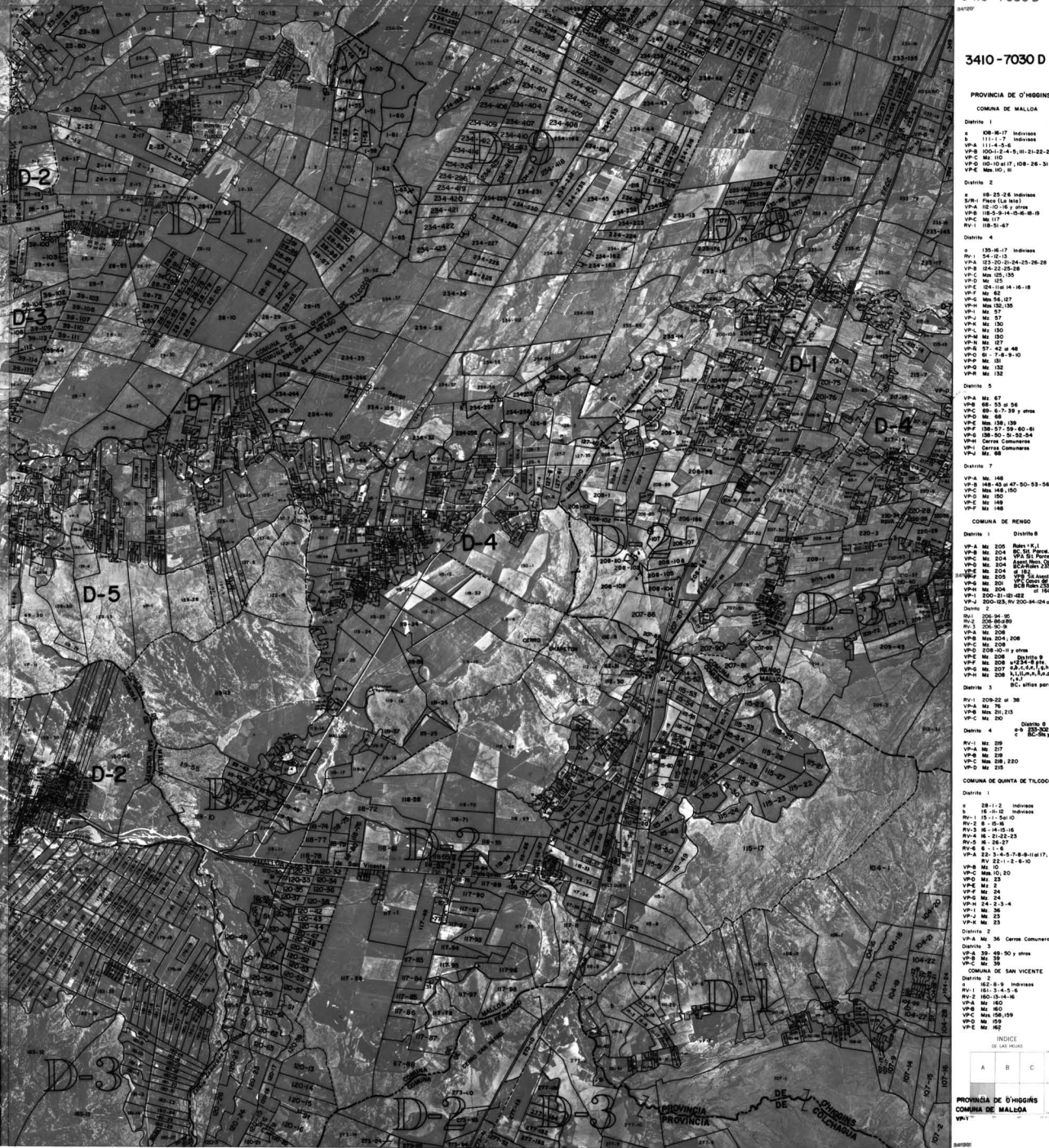
DISTRITO 14
V-A 100-100-10-17, 108-26-31
R-1 100-100-10-17, 108-26-31
V-B 100-100-10-17, 108-26-31
V-C 100-100-10-17, 108-26-31
V-D 100-100-10-17, 108-26-31
V-E 100-100-10-17, 108-26-31

DISTRITO 15
V-A 100-100-10-17, 108-26-31
R-1 100-100-10-17, 108-26-31
V-B 100-100-10-17, 108-26-31
V-C 100-100-10-17, 108-26-31
V-D 100-100-10-17, 108-26-31
V-E 100-100-10-17, 108-26-31

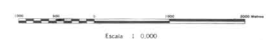
DISTRITO 16
V-A 100-100-10-17, 108-26-31
R-1 100-100-10-17, 108-26-31
V-B 100-100-10-17, 108-26-31
V-C 100-100-10-17, 108-26-31
V-D 100-100-10-17, 108-26-31
V-E 100-100-10-17, 108-26-31

DISTRITO 17
V-A 100-100-10-17, 108-26-31
R-1 100-100-10-17, 108-26-31
V-B 100-100-10-17, 108-26-31
V-C 100-100-10-17, 108-26-31
V-D 100-100-10-17, 108-26-31
V-E 100-100-10-17, 108-26-31

DISTRITO 18
V-A 100-100-10-17, 108-26-31
R-1 100-100-10-17, 108-26-31
V-B 100-100-10-17, 108-26-31
V-C 100-100-10-17, 108-26-31
V-D 100-100-10-17, 108-26-31
V-E 100-100-10-17, 108-26-31



ESTE DISEÑO SE PREPARÓ PARA IMPRESIÓN INTERNO USANDO
AEROFOTOGRAFÍAS TOMADAS EN 1985. AMBOS ESCRITOS POR EL
PROYECTO AEROFOTOGRAFICO DE LA O.E.A. EN CHILE
ACTUALIZADO PROPIEDADES 1979



Escala 1 : 6000

PROVINCIA	O'HIGGINS	COLCHAGUA
COMUNA	MALLOA - RENGO - QUINTA DE TILCOCO - SAN VICENTE	RENGO
DISTRITO	12-3-4-5-7-8-9-10-11-12-13	2-3

PROVINCIA DE O'HIGGINS
COMUNA DE MALLOA
VPT-1

INDICE
DE LAS HOJAS
A B C